

ΠΑΡΑΔΕΙΓΜΑΤΑ ΑΝΕΠΡΚΕΙΑΣ ΜΙΤΡΟΕΙΔΟΥΣ

ΒΛΑΣΗΣ ΝΙΝΙΟΣ

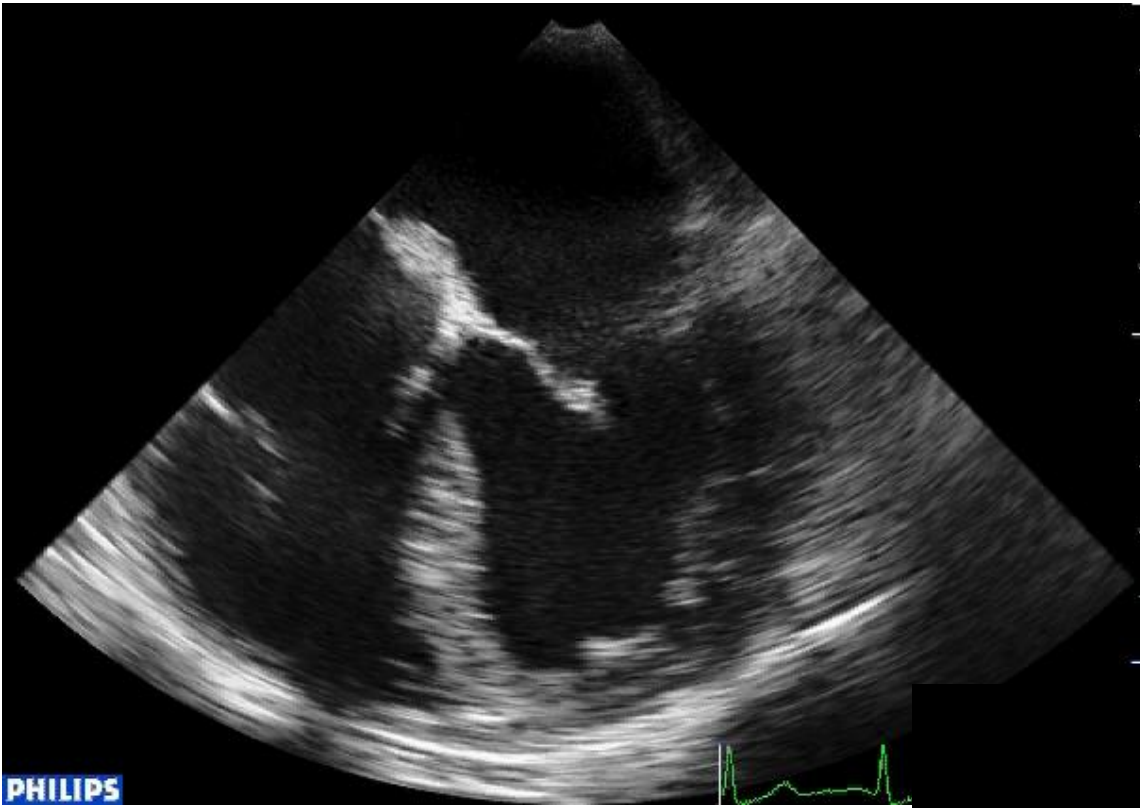
ΔΙΕΥΘΥΝΤΗΣ Β ΚΑΡΔΙΟΛΟΓΙΚΗΣ ΚΛΙΝΙΚΗΣ

ΙΑΤΡΙΚΟ ΔΙΑΒΑΛΚΑΝΙΚΟ ΚΕΝΤΡΟ

ΘΕΣΣΑΛΟΝΙΚΗΣ

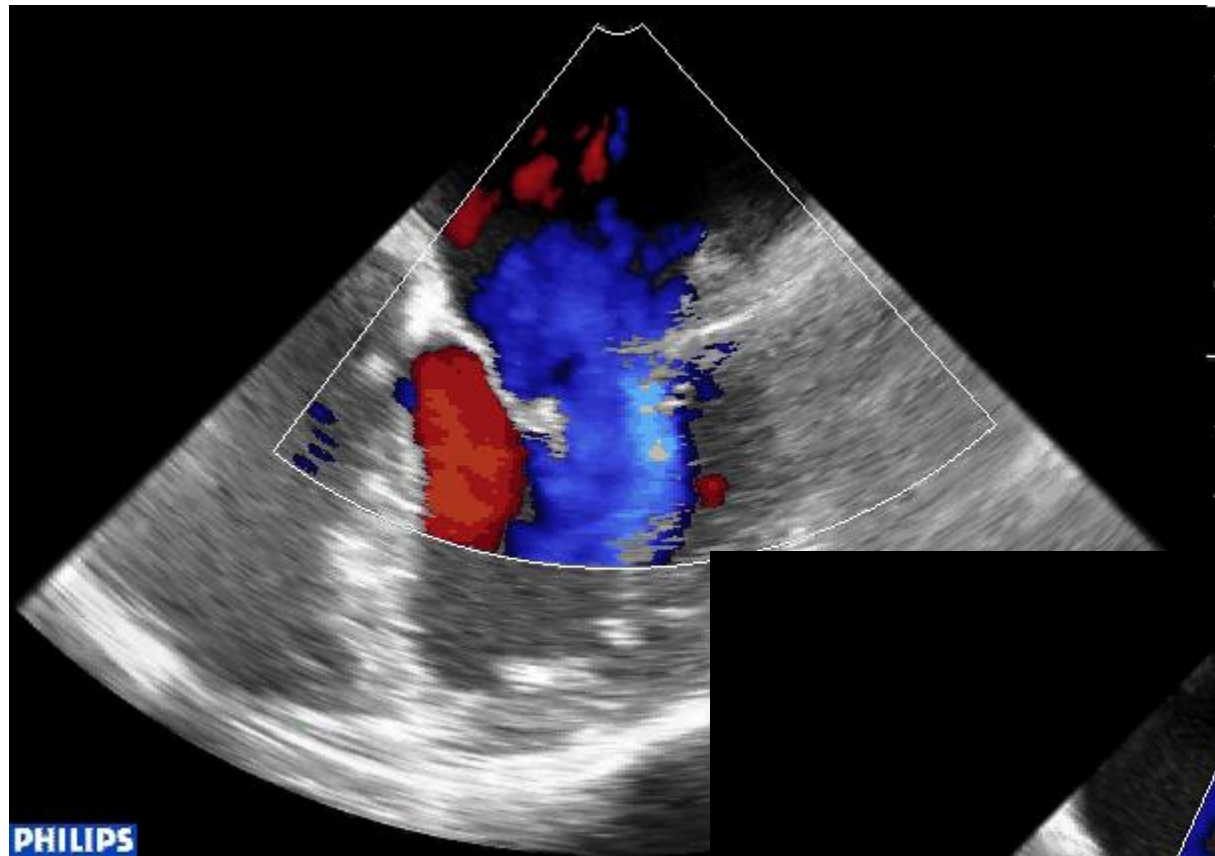


EUROPEAN
INTERBALKAN
MEDICAL CENTER
GREECE • THESSALONIKI





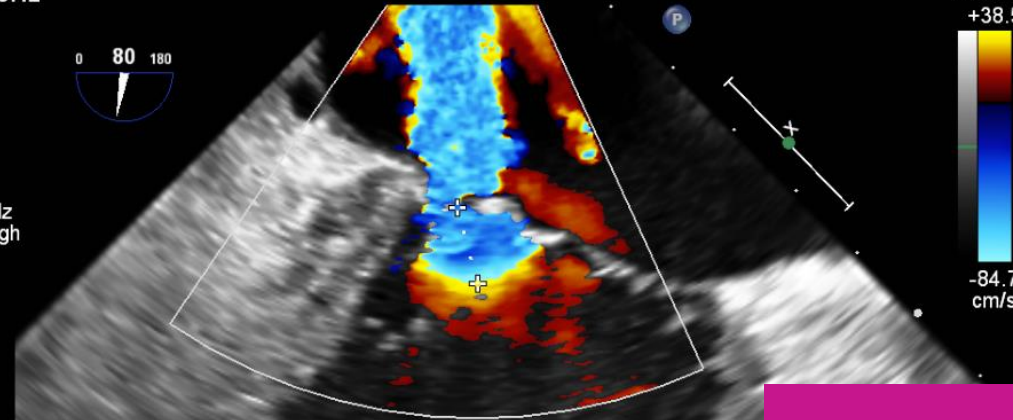
EUROPEAN
INTERBALKAN
MEDICAL CENTER
GREECE • THESSALONIKI



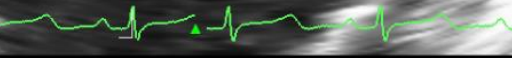


FR 13Hz
12cm

2D
71%
C 50
P Off
Gen
CF
63%
4.4MHz
WF High
Med

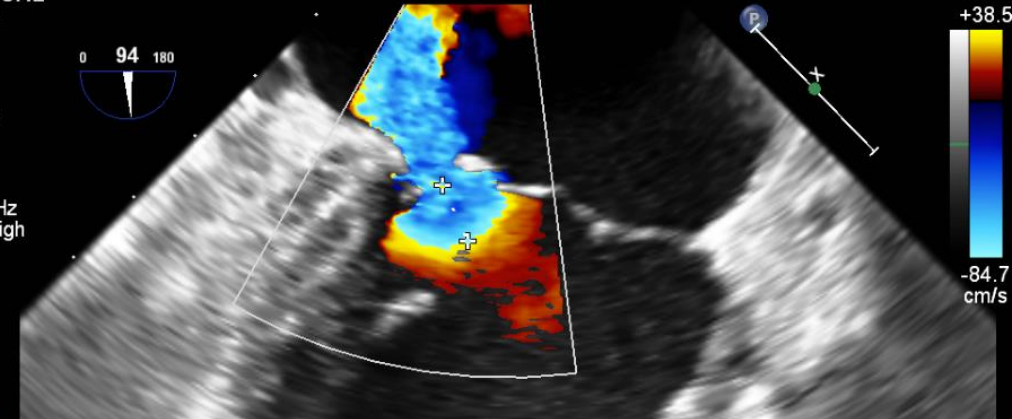


✦ MR Radius 0.9 cm
MR Flow Rate 235.2 ml/s
MR ERO 0.50 cm²
MR Volume 80 ml

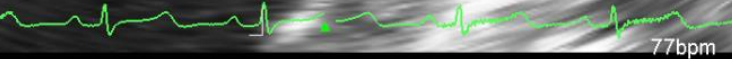


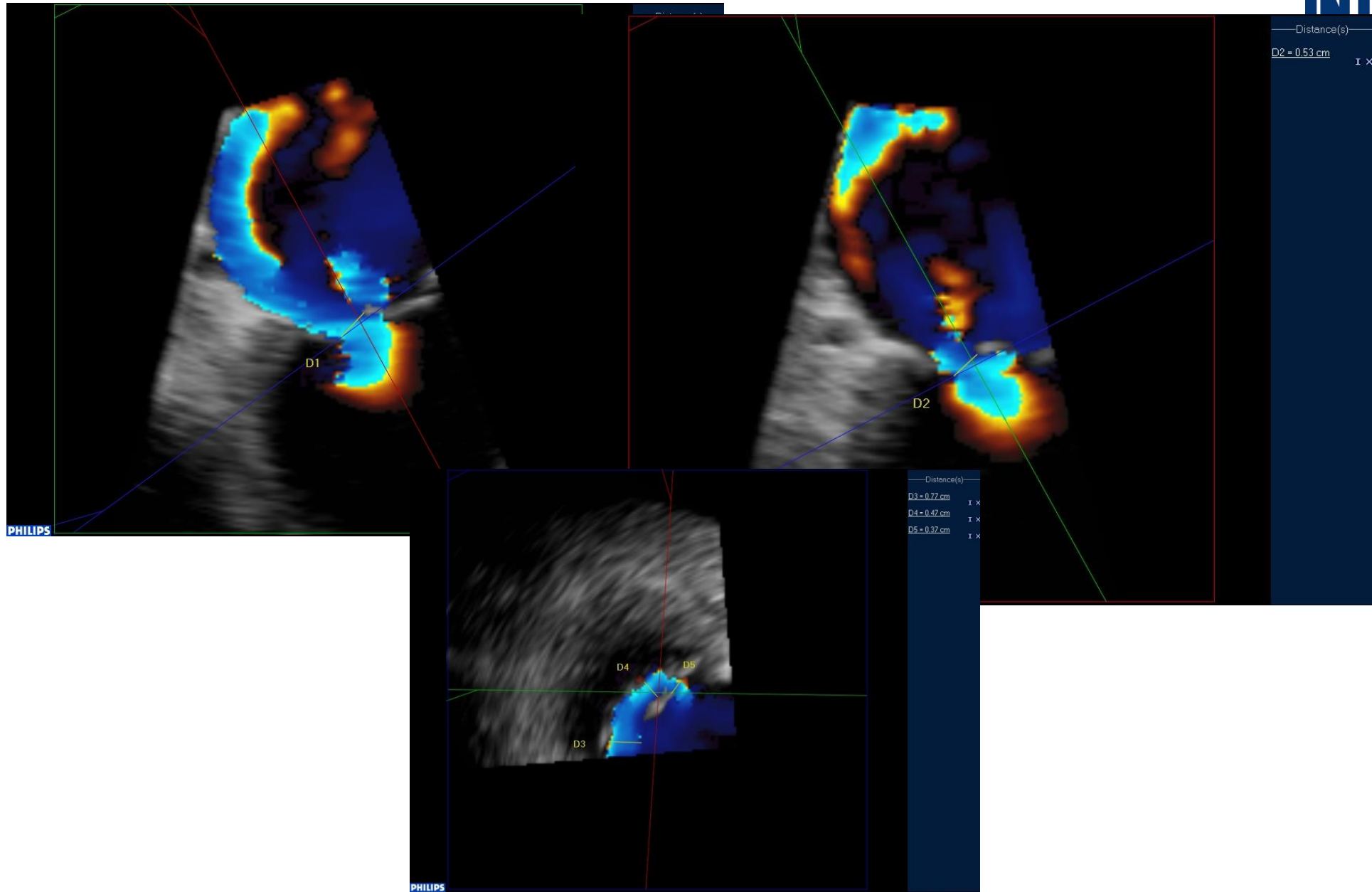
FR 18Hz
12cm

2D
71%
C 50
P Off
Gen
CF
63%
4.4MHz
WF High
Med

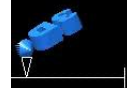
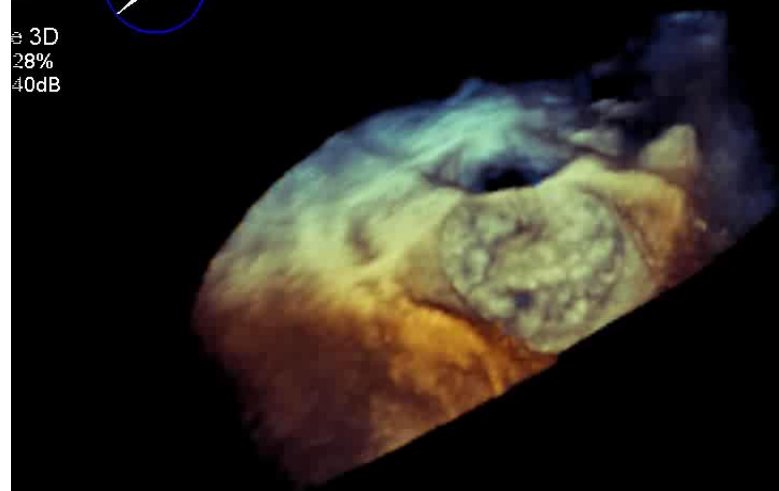


MR Alias Vel 38.5 cm/s
✦ MR Radius 0.7 cm
MR Flow Rate 118.6 ml/s
MR ERO 0.25 cm²
MR Volume 40 ml



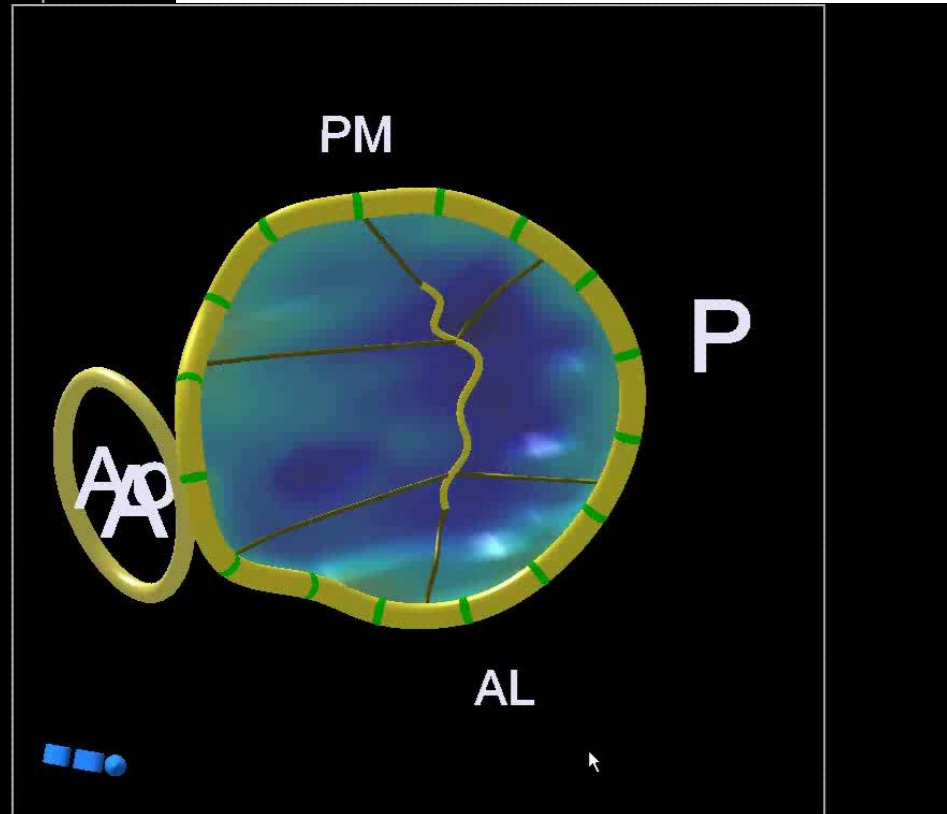
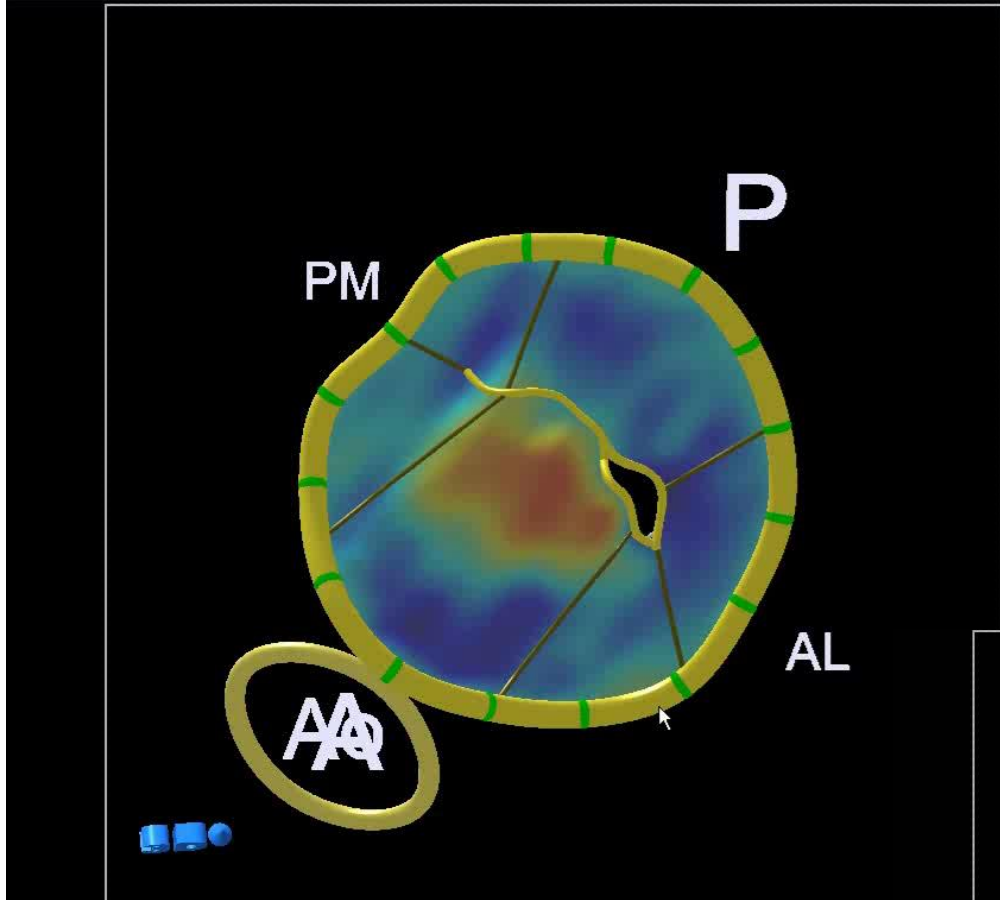


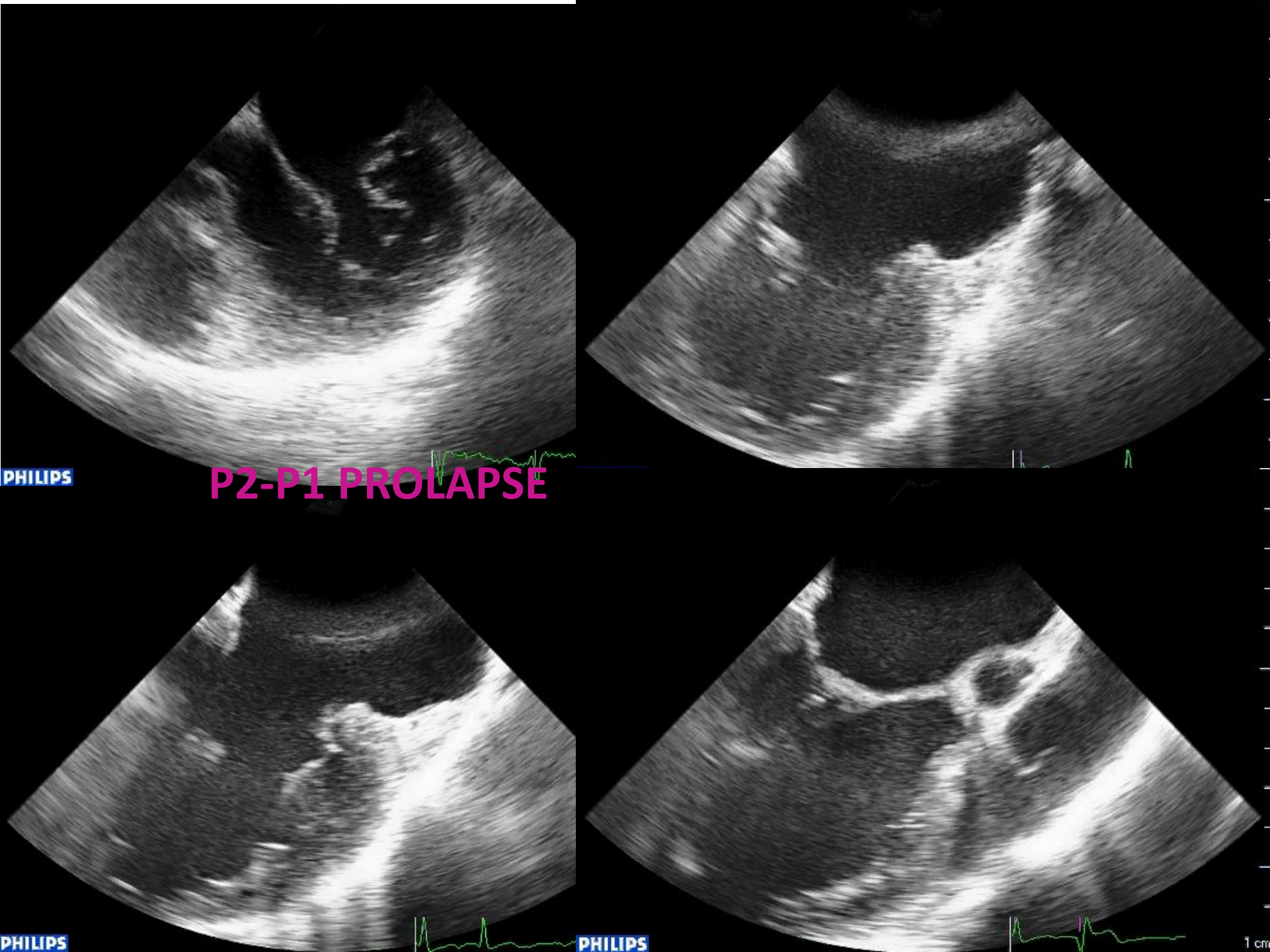
11Hz 0 40 180
n
e 3D
28%
40dB





EUROPEAN
INTERBALKAN
MEDICAL CENTER
GREECE • THESSALONIKI





PHILIPS

P2-P1 PROLAPSE

PHILIPS

PHILIPS

1 cm

Philips Medical

2009/11/03

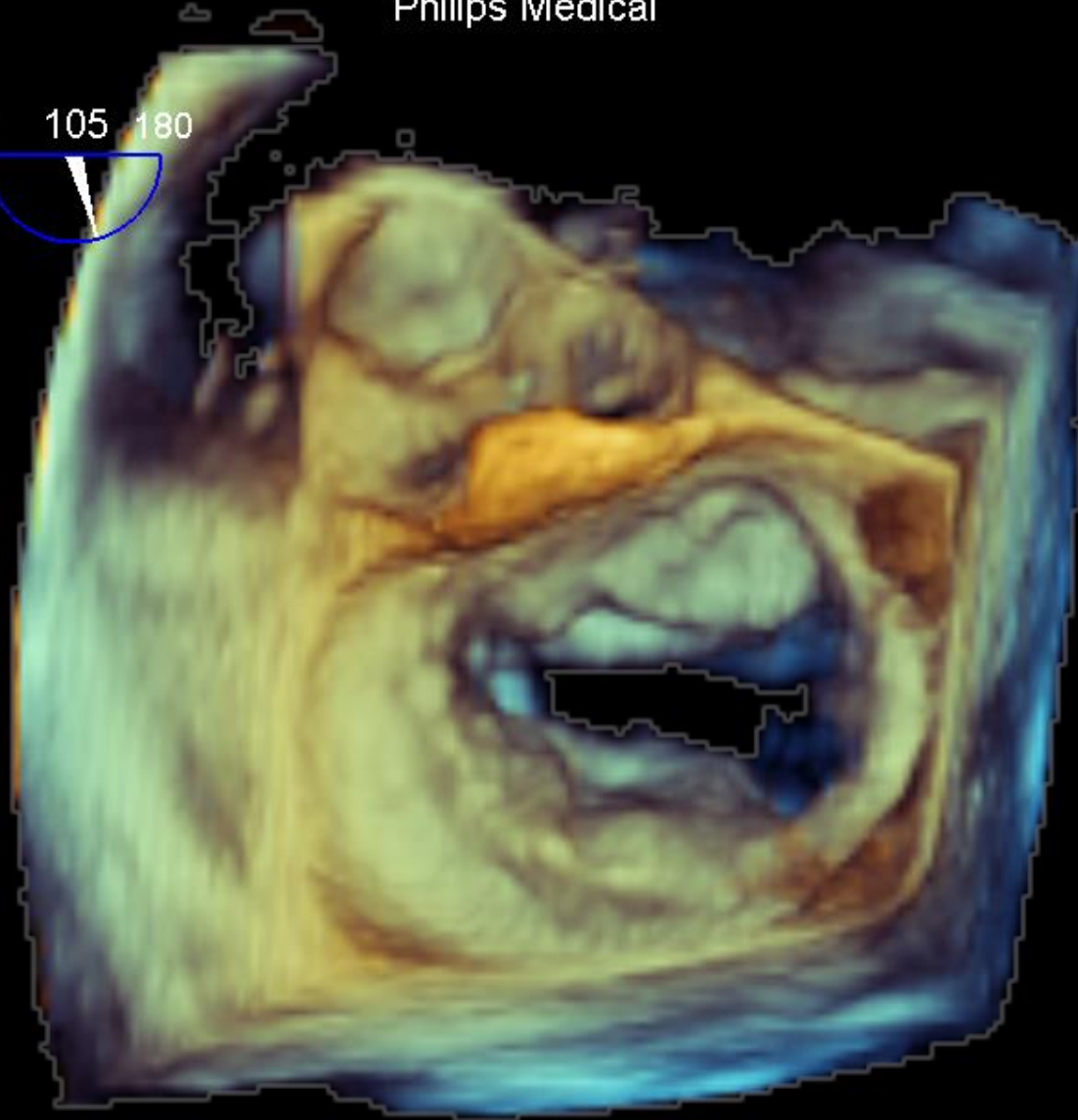
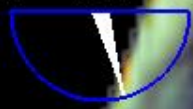
08:56:58AM



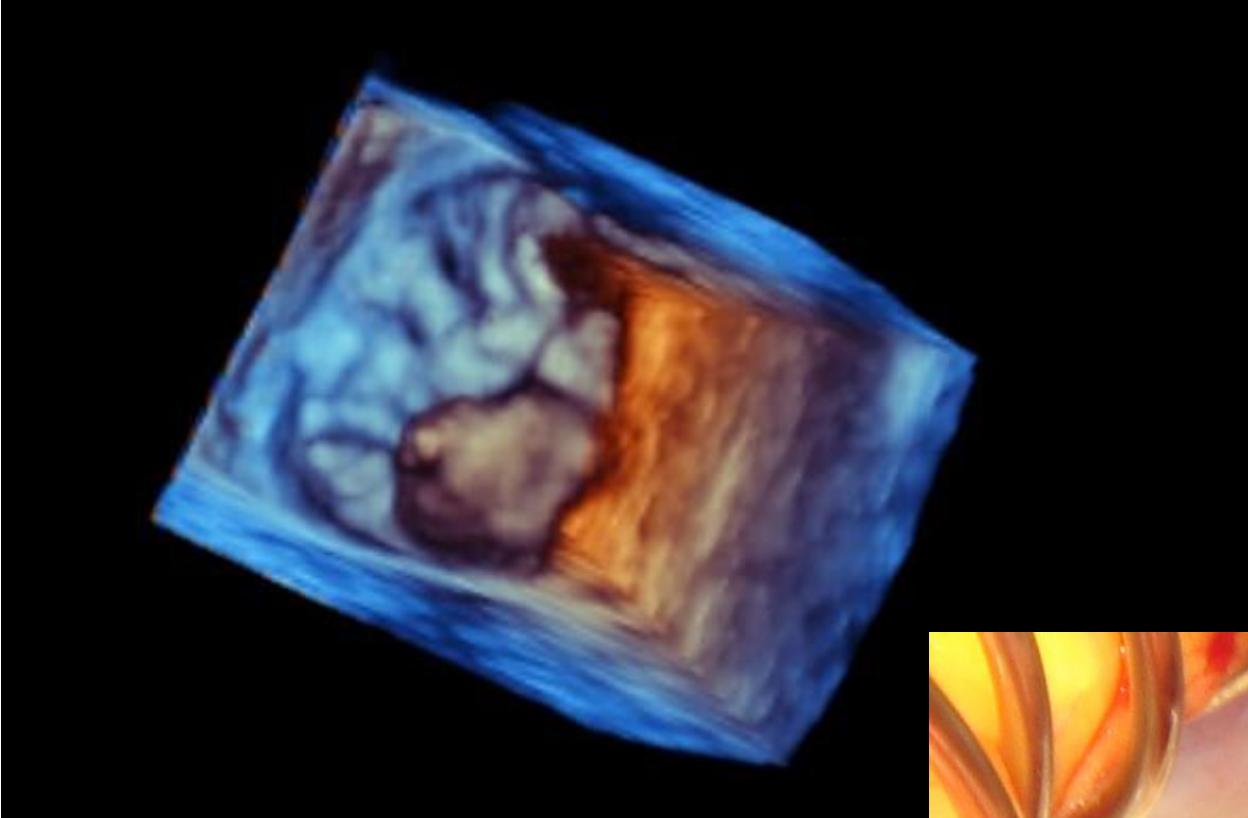
EUROPEAN
ERBALKAN
MEDICAL CENTER
GREECE • THESSALONIKI

VR 11Hz 0 105 180
8cm

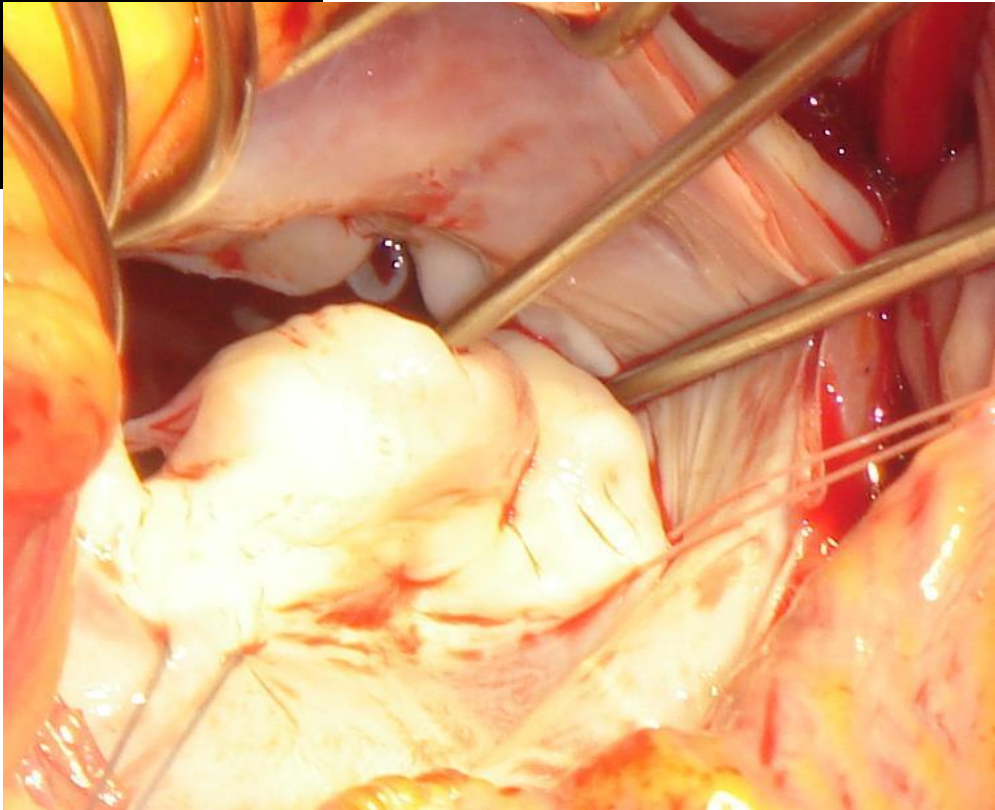
Live 3D
3D 6%
3D 40dB



109 bpm



EUROPEAN
INTERBALKAN
MEDICAL CENTER
GREECE • THESSALONIKI





EUROPEAN
INTERBALKAN
MEDICAL CENTER
GREECE • THESSALONIKI



View RAW Cropping **MVO** MPB Setup

Volume Slices **Model**



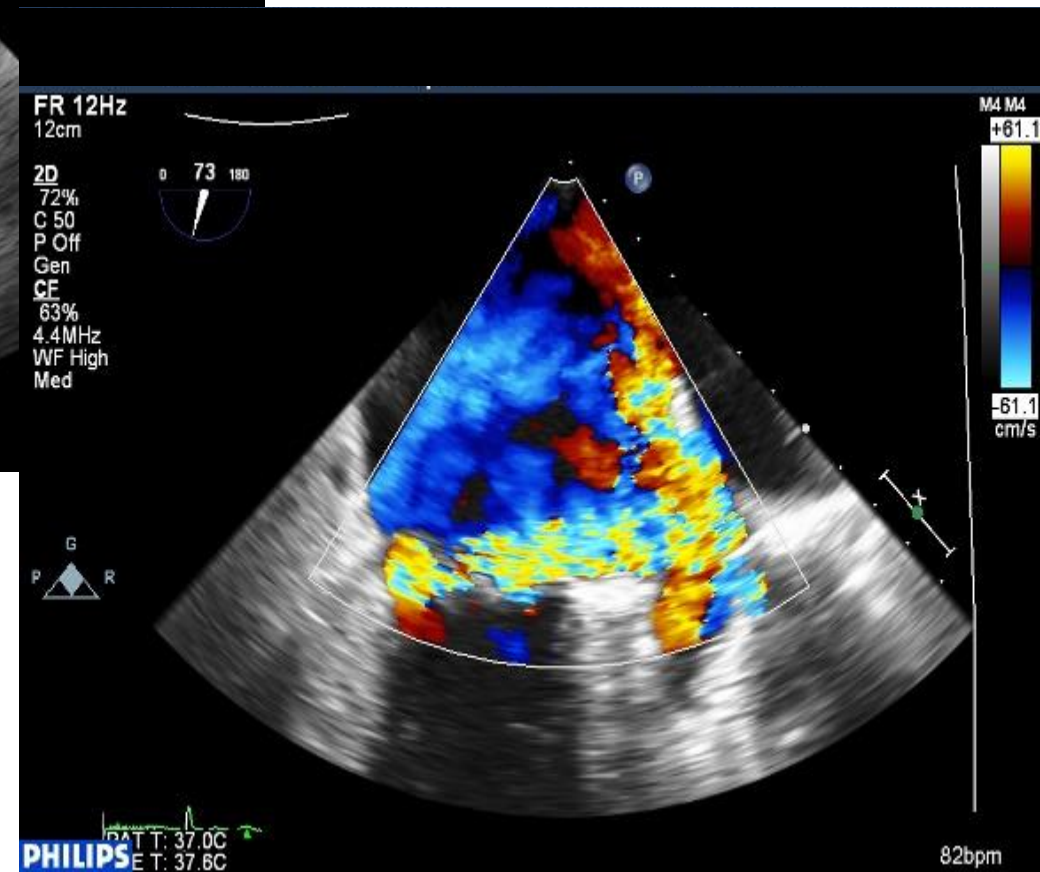
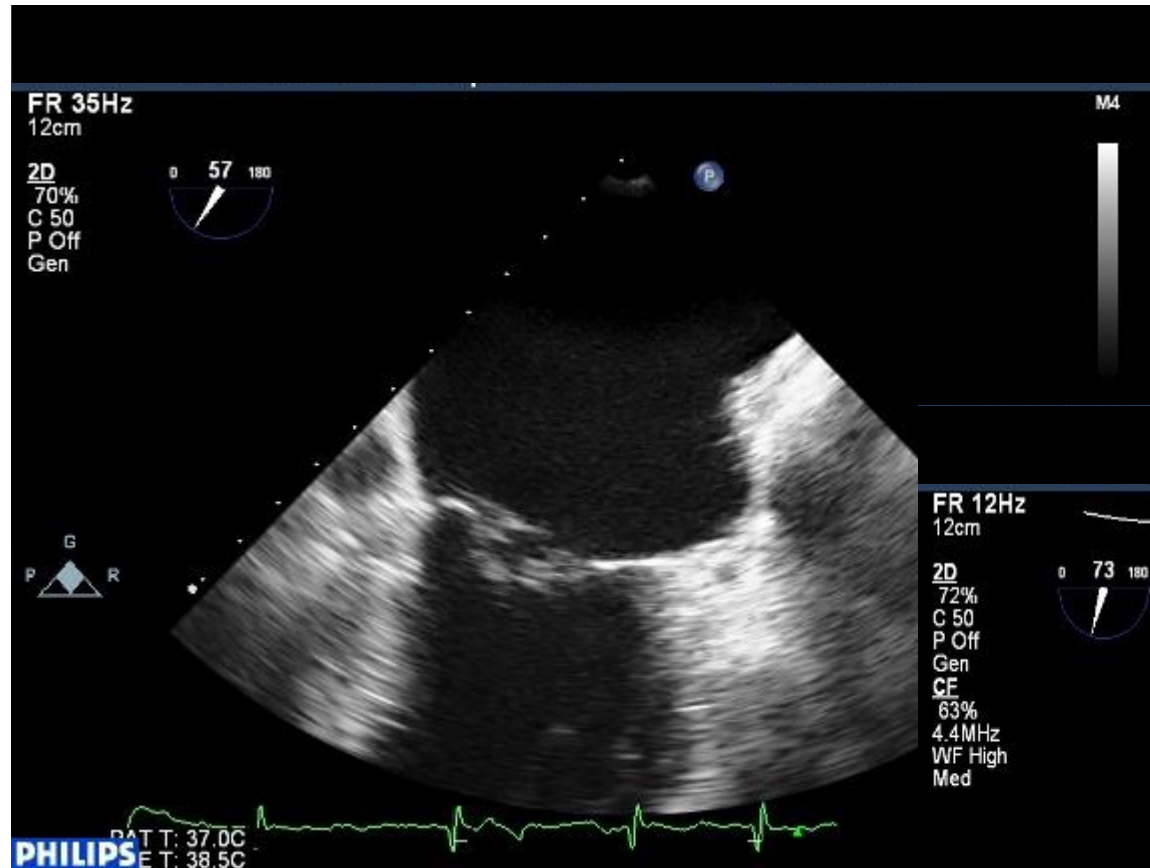
EUROPEAN
INTERBALKAN
MEDICAL CENTER
GREECE • THESSALONIKI



Speaker



EUROPEAN
INTERBALKAN
MEDICAL CENTER
GREECE • THESSALONIKI

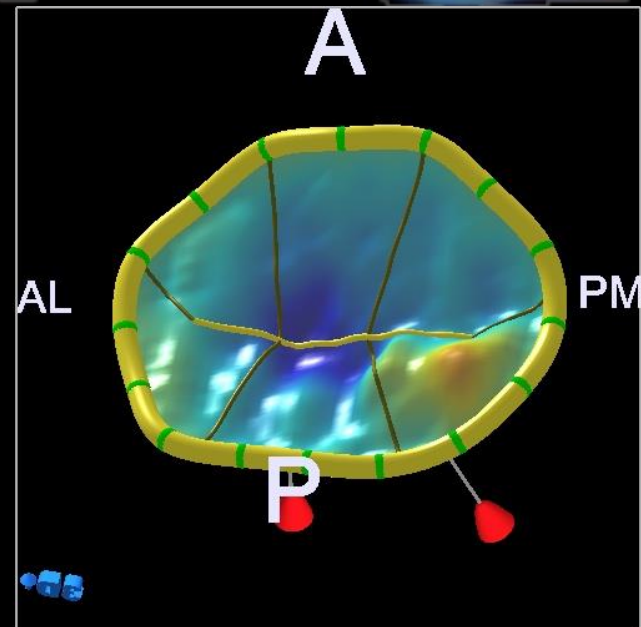
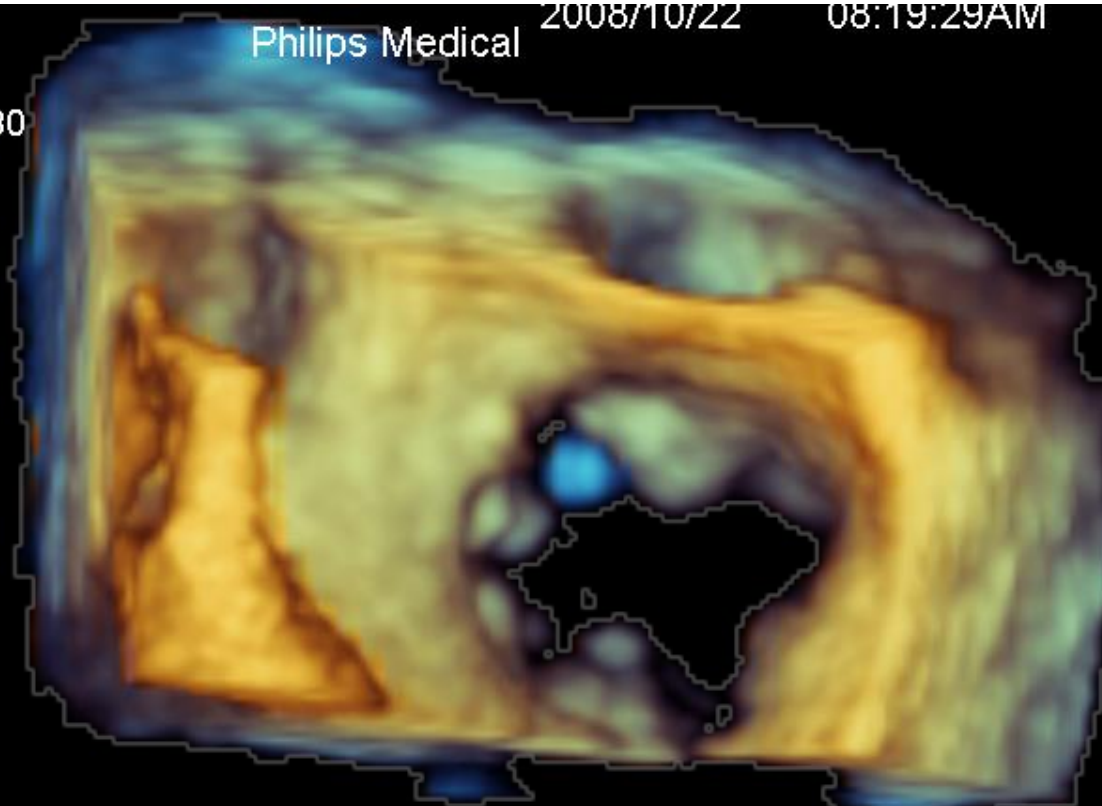




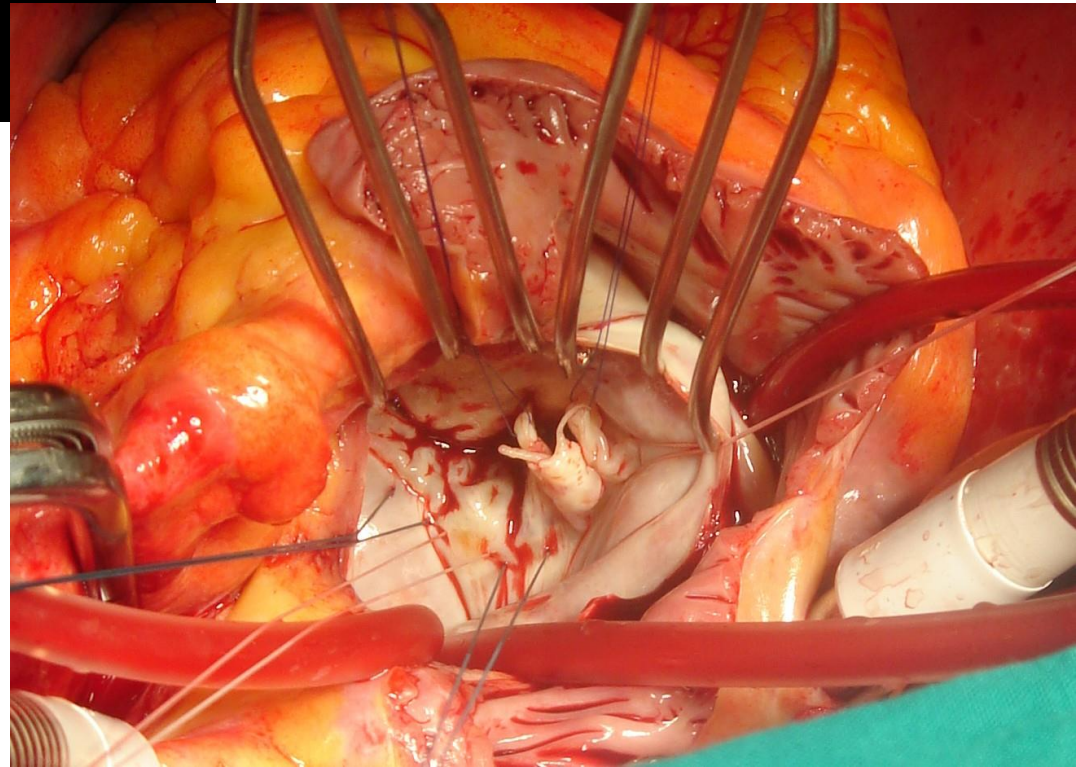
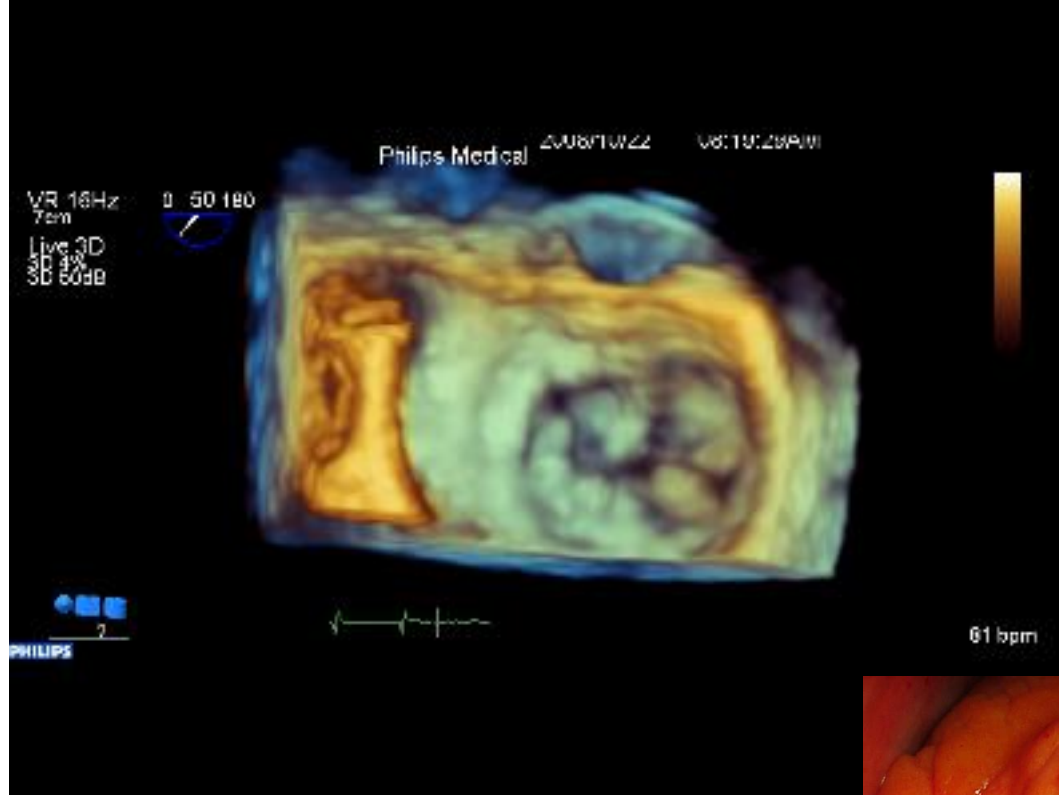
VR 16Hz
7cm



Live 3D
3D 4%
3D 50dB

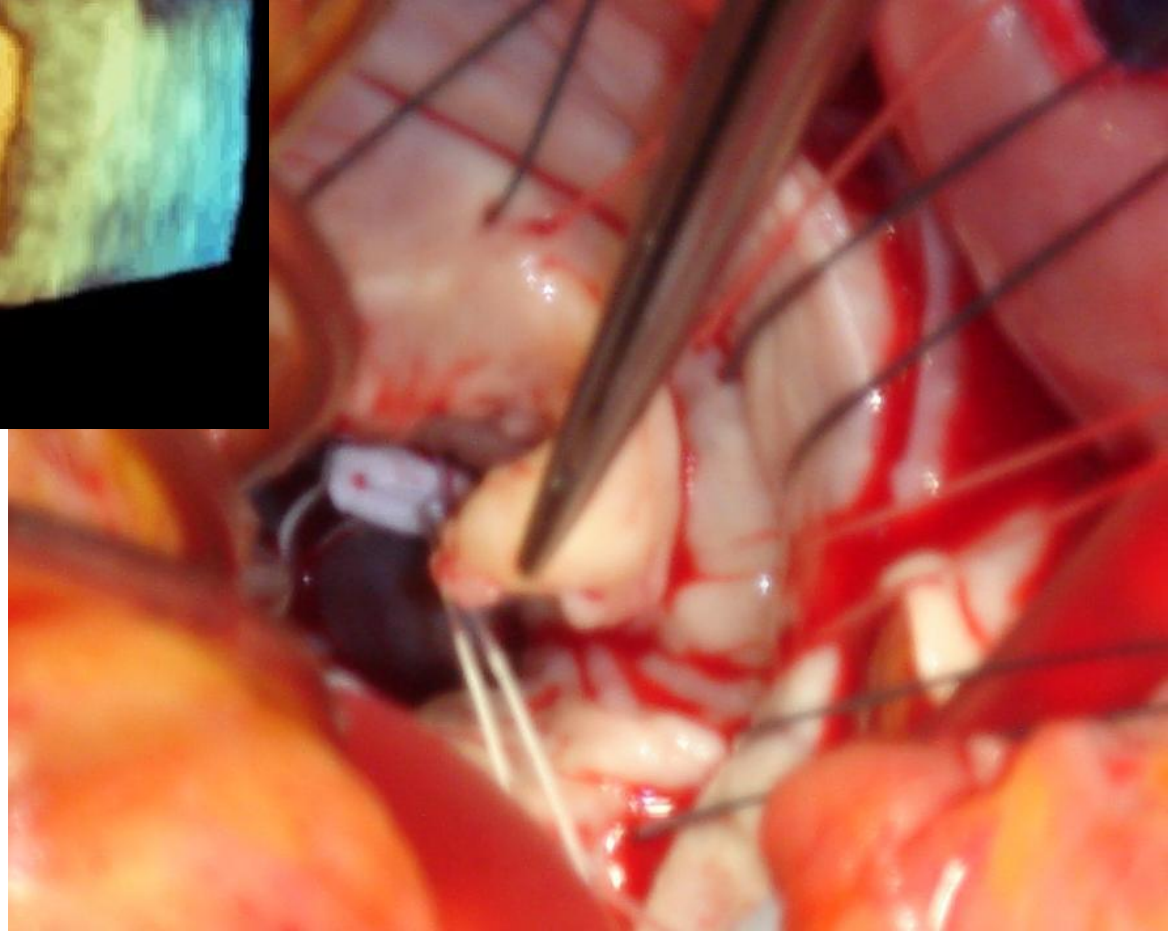
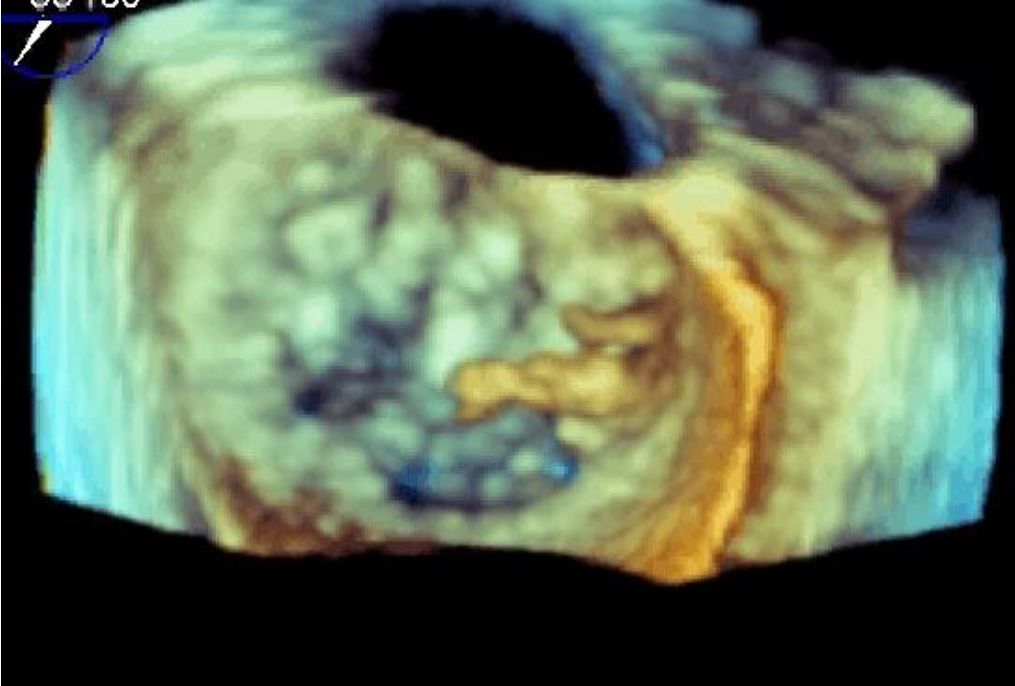


- Annulus
- DAIPm = 46.0 mm
- DAP = 39.0 mm
- H = 6.1 mm
- C3D = 142.2 mm
- A2D = 1511.4 mm²
- Leaflet Area
- A3DE Ant = ~~mm²~~
- A3DE Post = ~~mm²~~
- Leaflet Volume
- VTent = 3.2 ml
- VProL = 0.2 ml
- Leaflet Len./Ang.
- L3DE A2 = ~~mm~~
- L3DE P2 = ~~mm~~
- β Ant = 23.9 °
- β Post = 38.8 °
- β NPA = 117.3 °
- HTent = 7.1 mm
- HProL = 3.8 mm





EUROPEAN
INTERBALKAN
MEDICAL CENTER
GREECE • THESSALONIKI

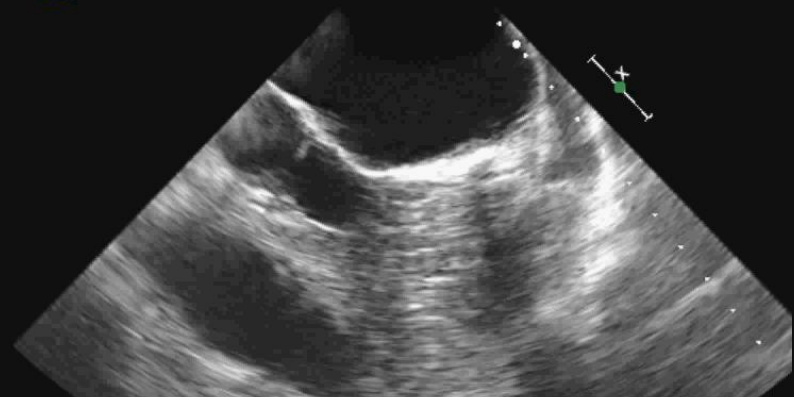




EUROPEAN
ERBALKAN
MEDICAL CENTER
GREECE • THESSALONIKI

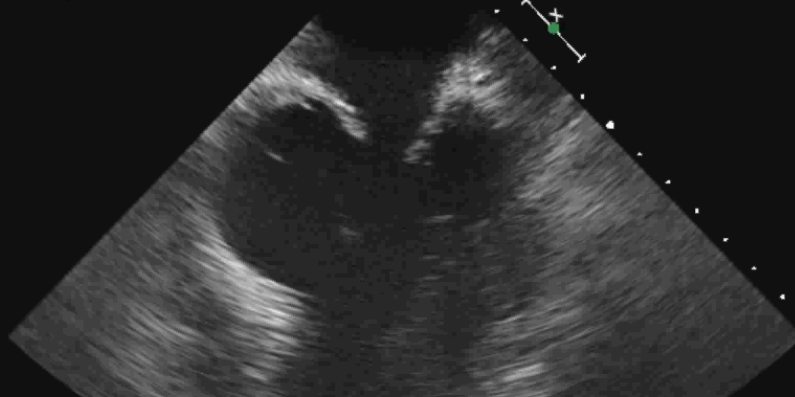
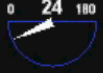
FR 35Hz
14cm

2D
75%
C 50
P Off
Gen



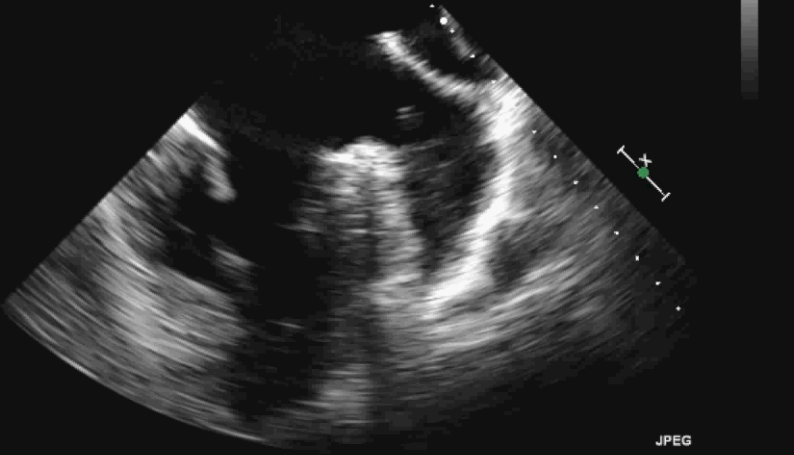
FR 35Hz
14cm

2D
75%
C 50
P Off
Gen



FR 35Hz
16cm

2D
82%
C 50
P Off
Pen



FR 35Hz
16cm

2D
82%
C 50
P Off
Pen



PAT T: 37.0C
TEE T: 39.3C

65 bpm

PAT T: 37.0C
TEE T: 38.9C

82 bpm

JPEG

JPEG



EUROPEAN
INTERBALKAN
MEDICAL CENTER
GREECE • THESSALONIKI

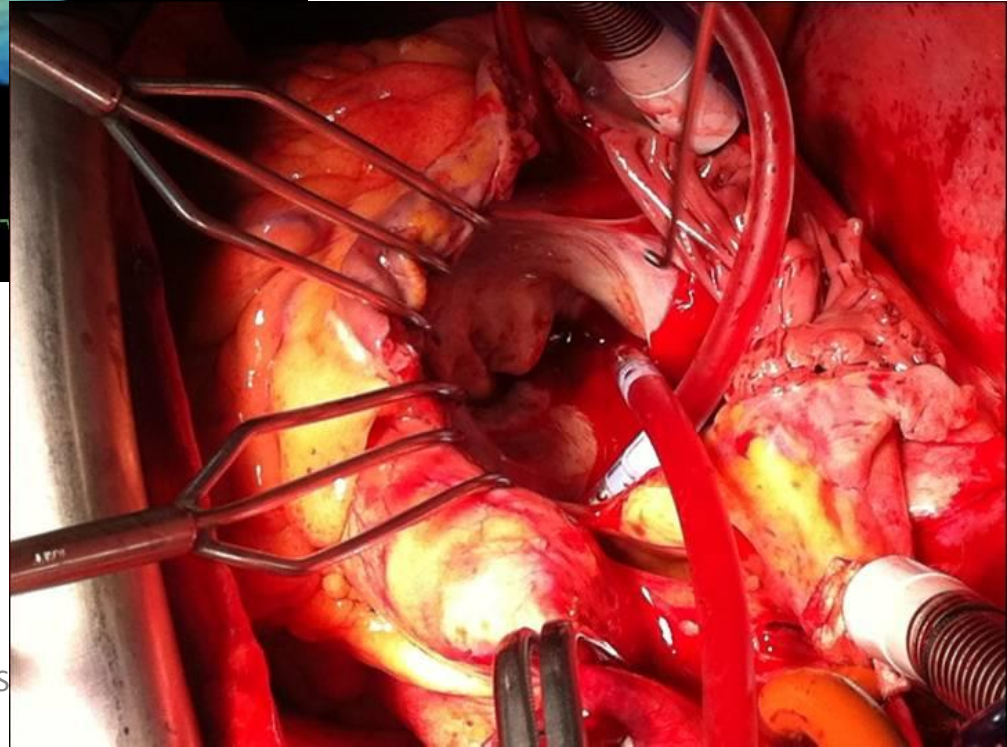
9Hz
n
e 3D
30%
40dB



3D



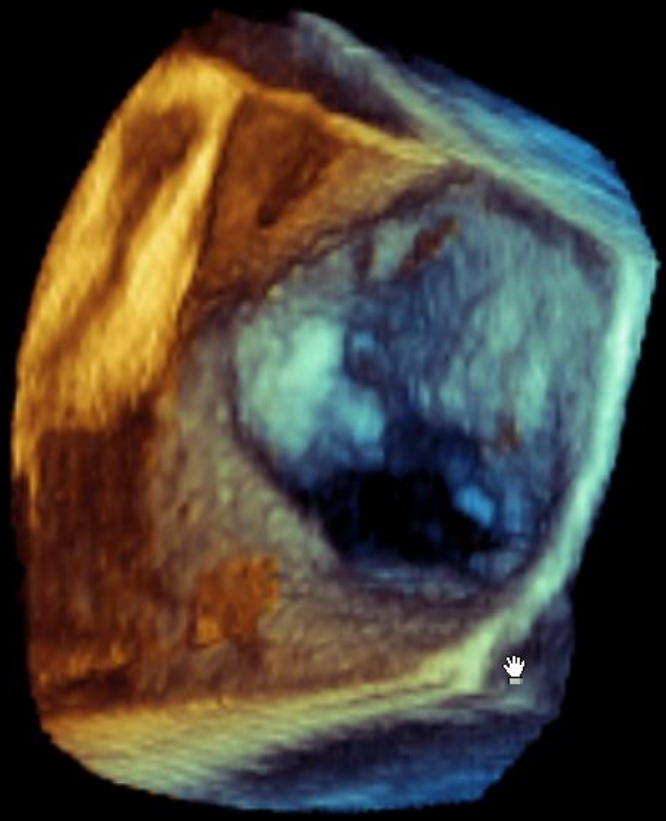
EUROPEAN
INTERBALKAN
MEDICAL CENTER
GREECE • THESSALONIKI



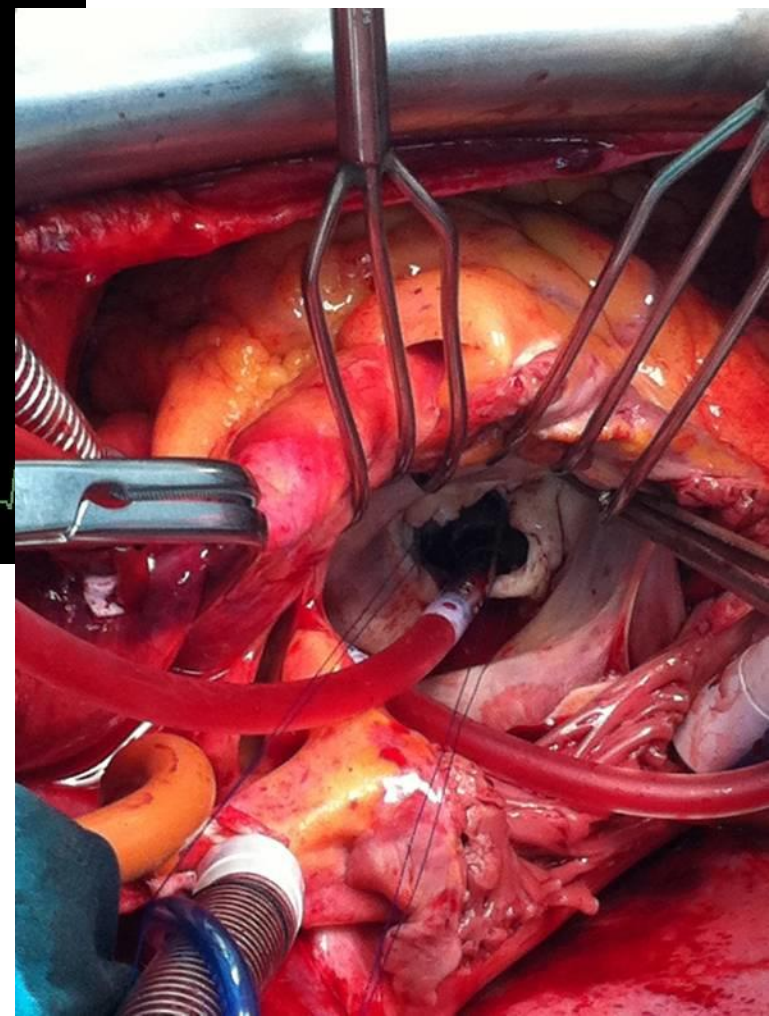
9Hz
n
e 3D
30%
40dB



3D1



EUROPEAN
INTERBALKAN
MEDICAL CENTER
GREECE • THESSALONIKI

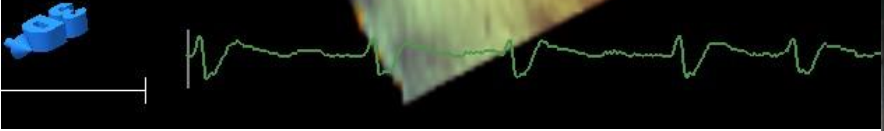
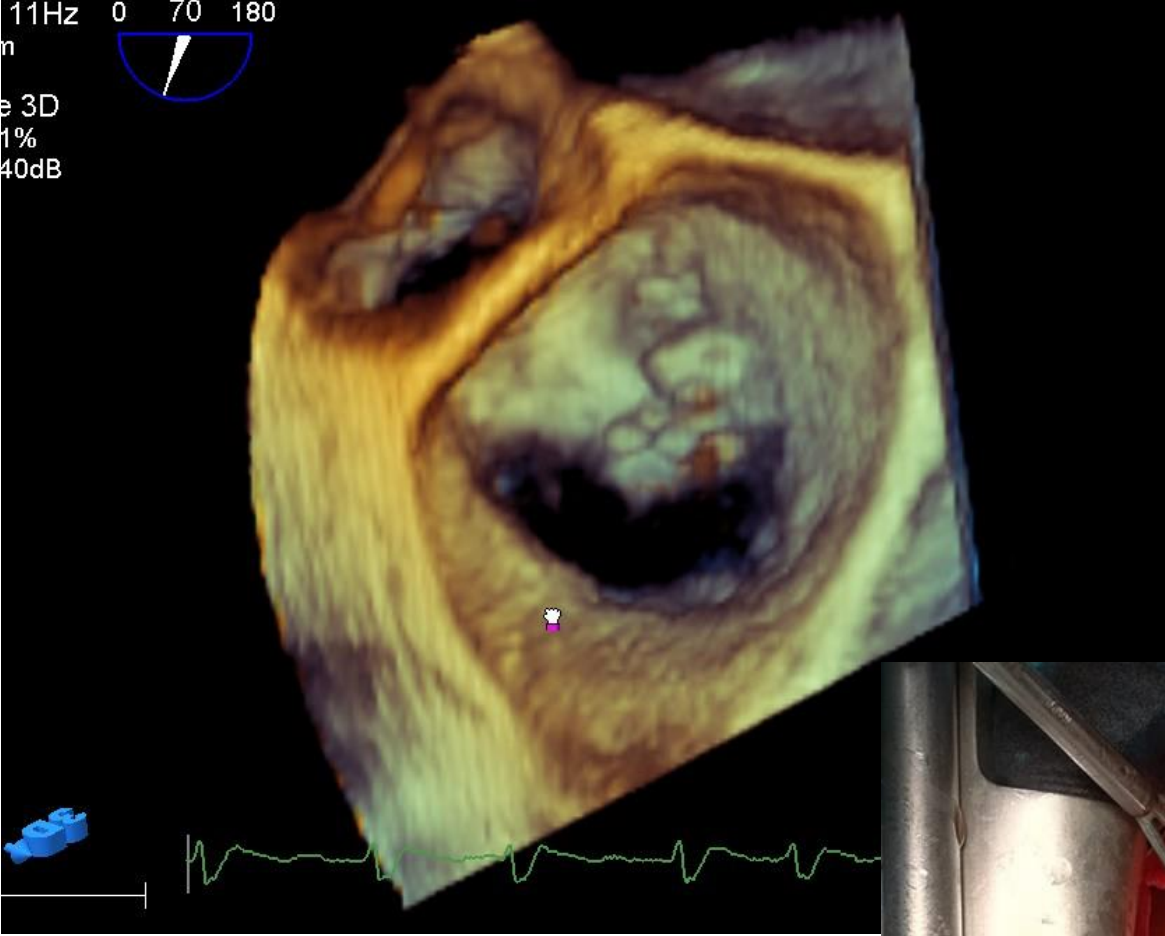


Speaker

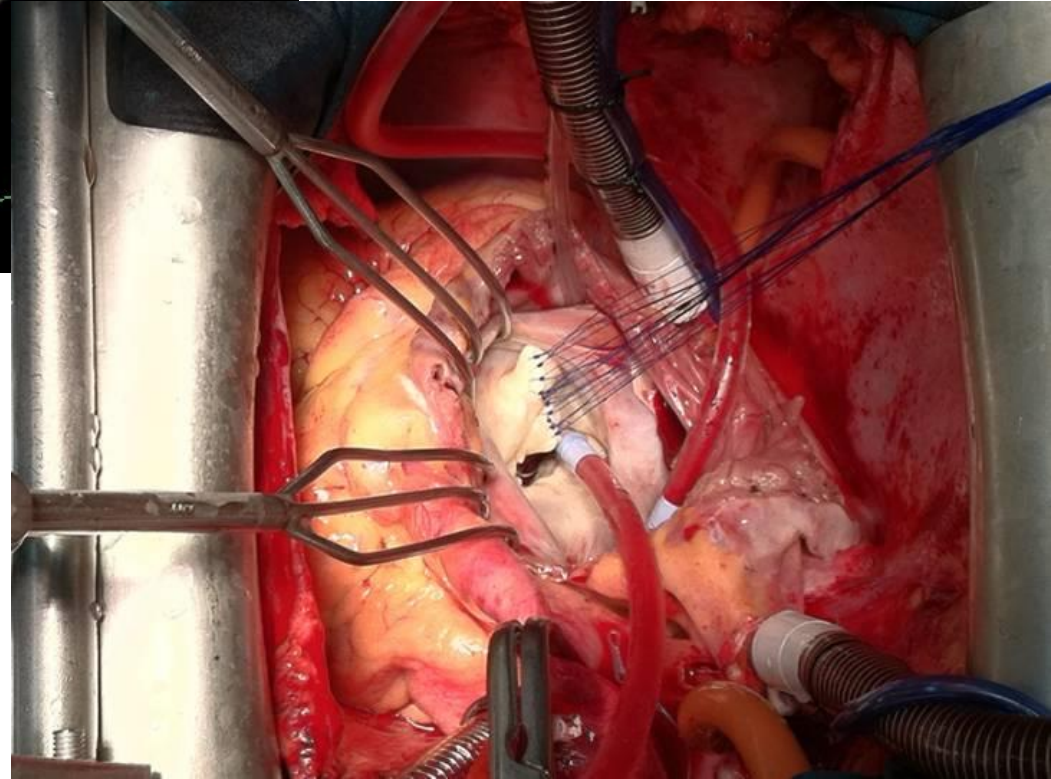


EUROPEAN
INTERBALKAN
MEDICAL CENTER
GREECE • THESSALONIKI

11Hz 0 70 180
e 3D
1%
40dB



EUROPEAN
INTERBALKAN
MEDICAL CENTER
GREECE • THESSALONIKI





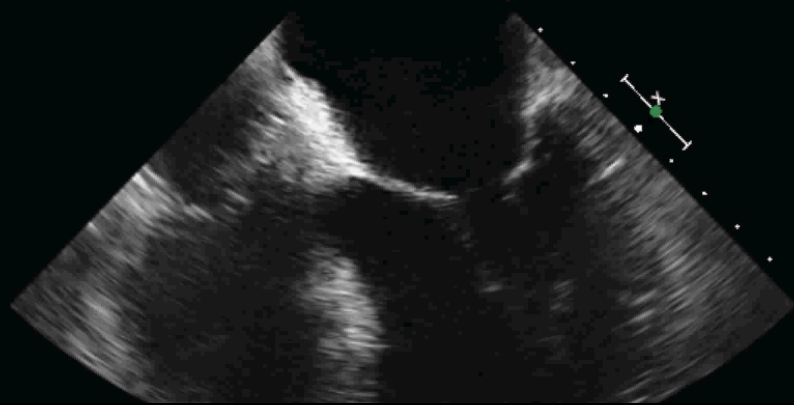
EUROPEAN
ERBALKAN
MEDICAL CENTER
GREECE • THESSALONIKI

FR 35HZ
12cm

2D
72%
C 50
P Off
Gen



G
P R

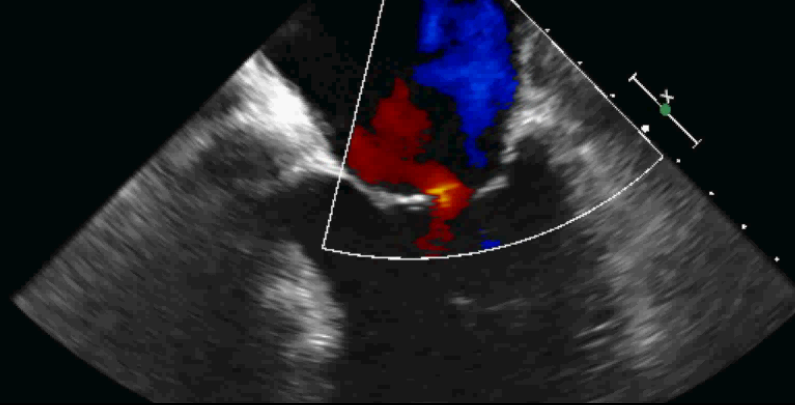


FR 13HZ
12cm

2D
75%
C 50
P Off
Gen
CF
63%
4.4MHz
WF High
Med



G
P R

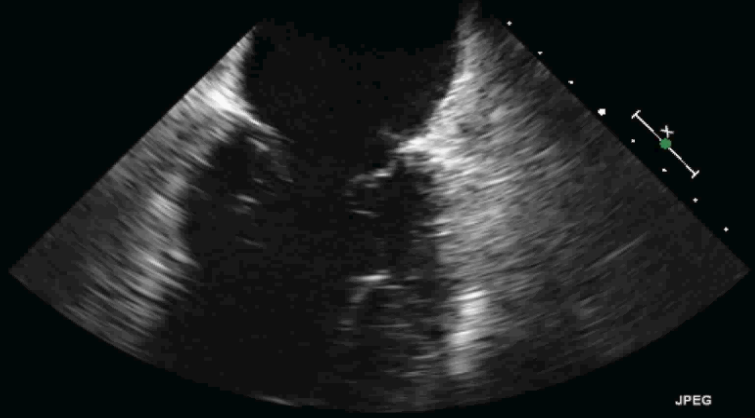


FR 35HZ
12cm

2D
72%
C 50
P Off
Gen



G
P R

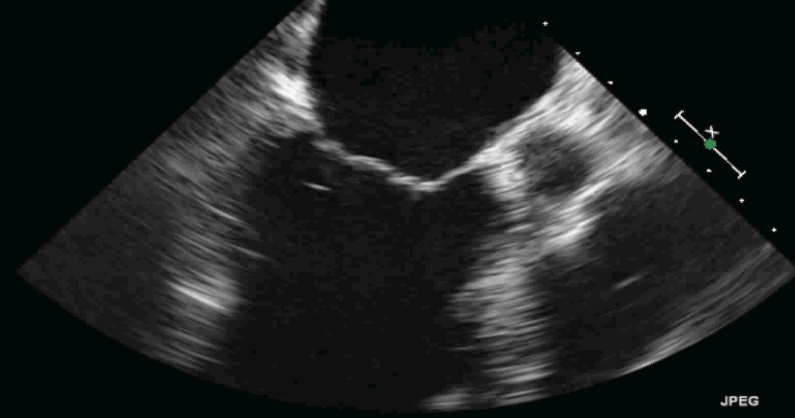


FR 35HZ
12cm

2D
72%
C 50
P Off
Gen



G
P R



PAT T: 37.0C
TEE T: 37.5C

JPEG

71 bpm



PAT T: 37.0C
TEE T: 37.9C

JPEG

69 bpm

Philips Medical

2010/07/01

09:18:59AM

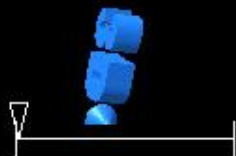
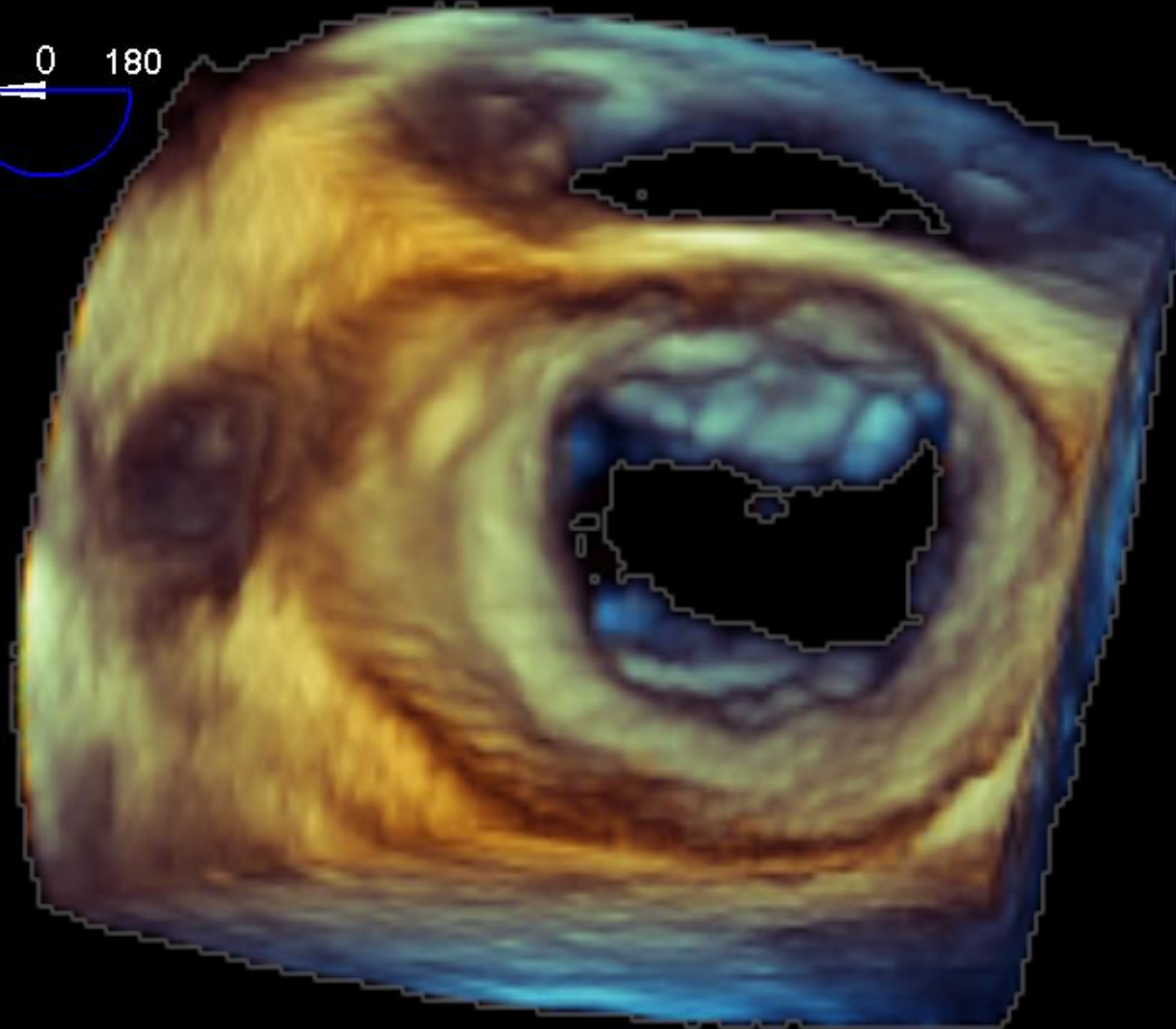


EUROPEAN
ERBALKAN
MEDICAL CENTER
GREECE • THESSALONIKI

VR 12Hz
6cm



Live 3D
3D 17%
3D 40dB



71 bpm



EUROPEAN
ERBALKAN
MEDICAL CENTER
GREECE • THESSALONIKI

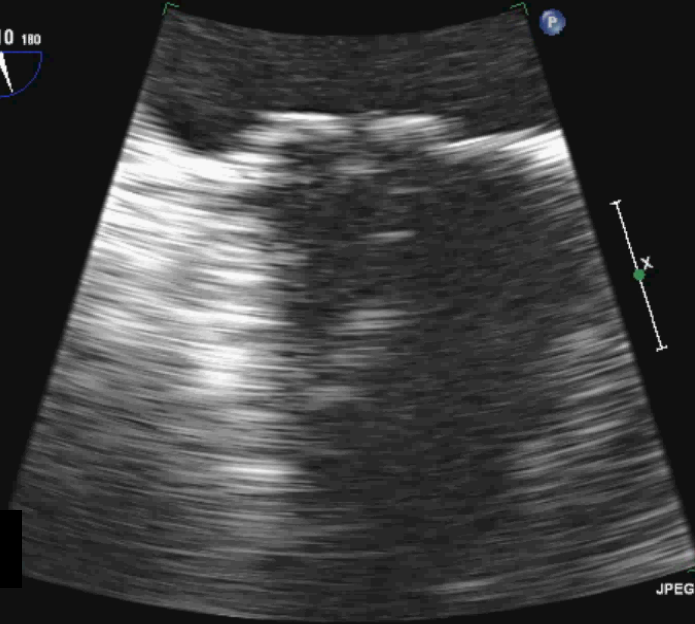
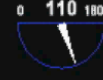
FR 35Hz
17cm

2D
82%
C 50
P Off
Gen



FR 82Hz
15cm

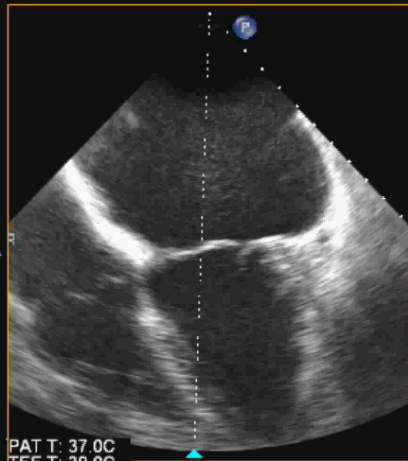
2D
82%
C 50
P Off
Gen



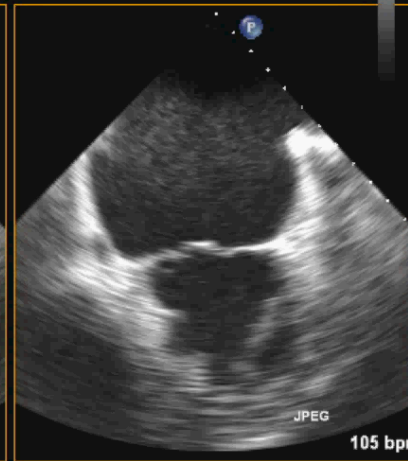
95 bpm

PAT T: 37.0C
TEE T: 39.3C

3D Zoom
82%
82%
50dB
P Off
Gen



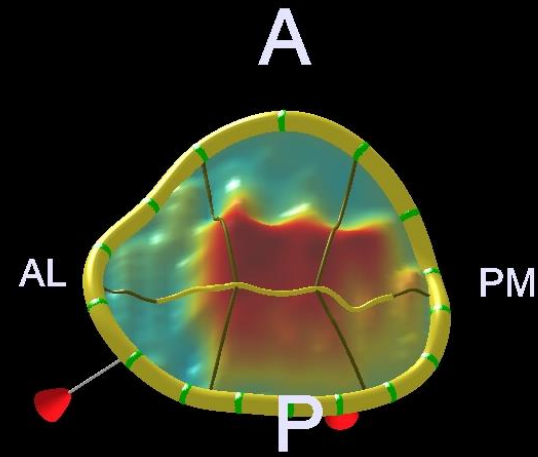
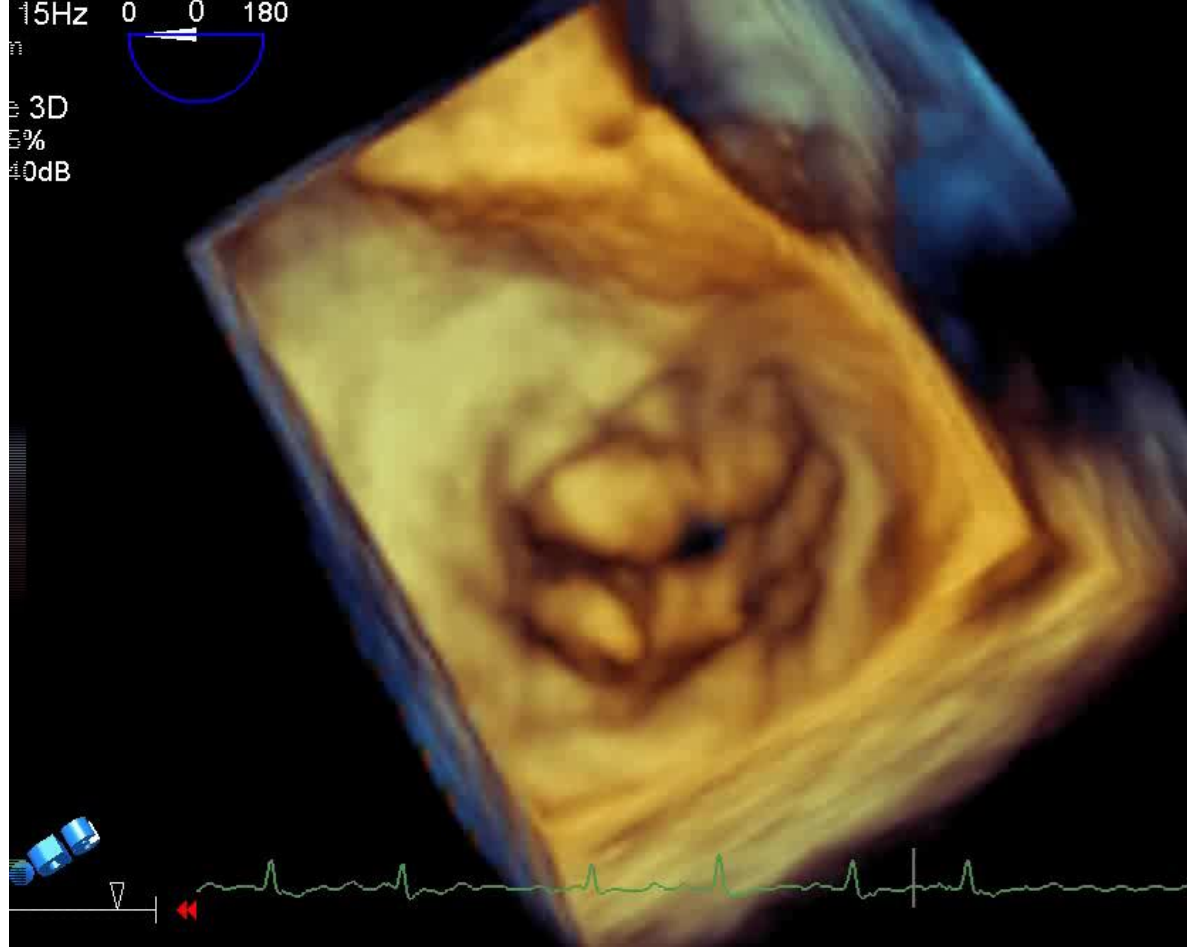
PAT T: 37.0C
TEE T: 39.0C



105 bpm

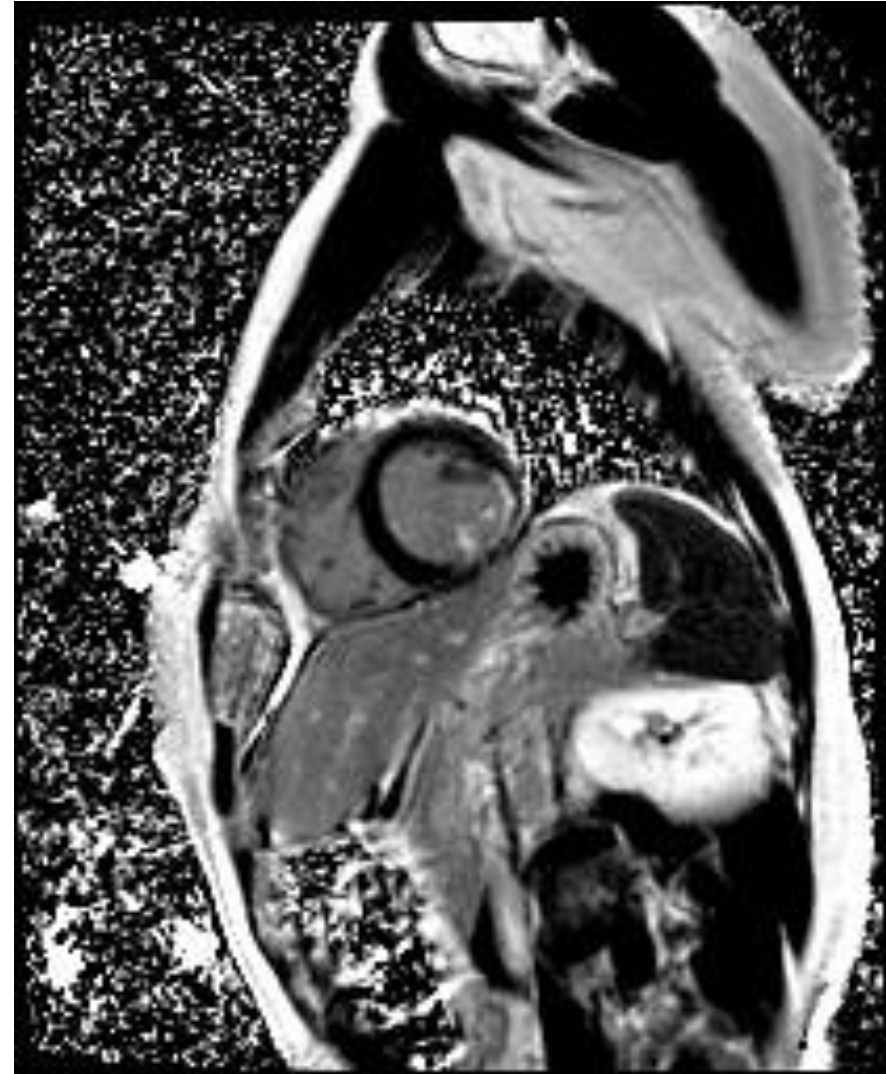
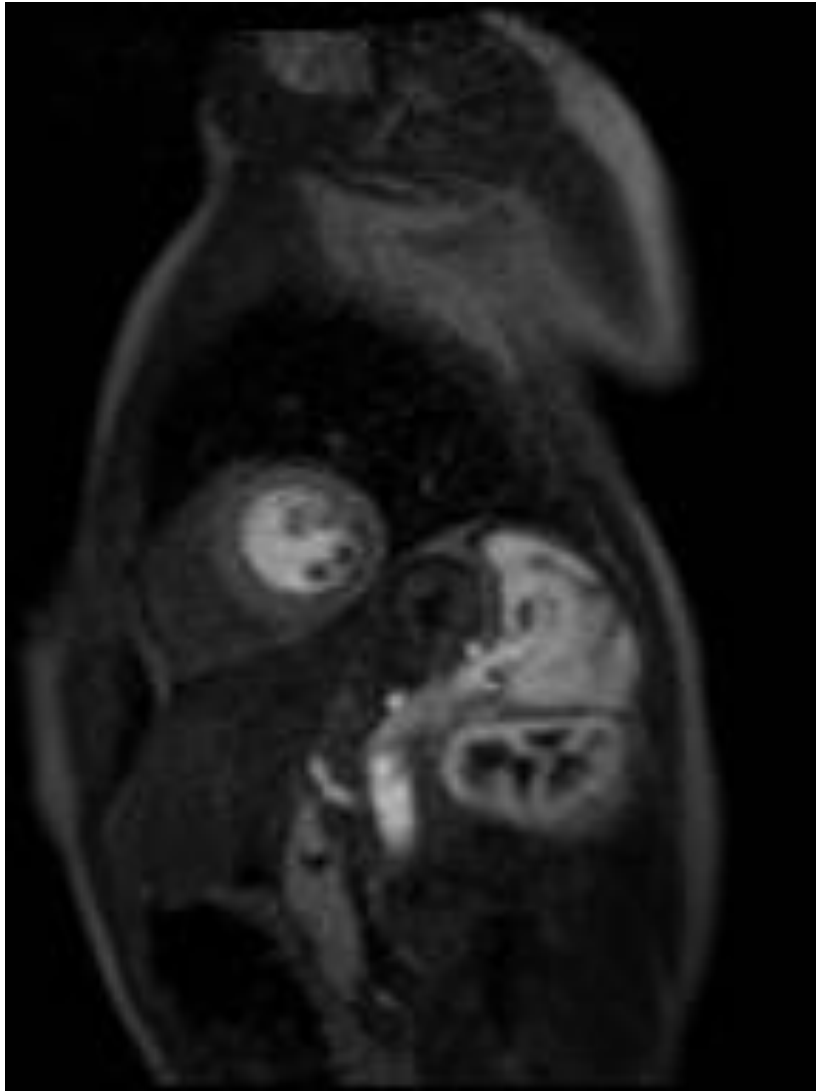


EUROPEAN
INTERBALKAN
MEDICAL CENTER
GREECE • THESSALONIKI



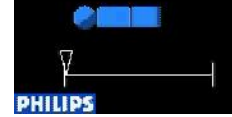
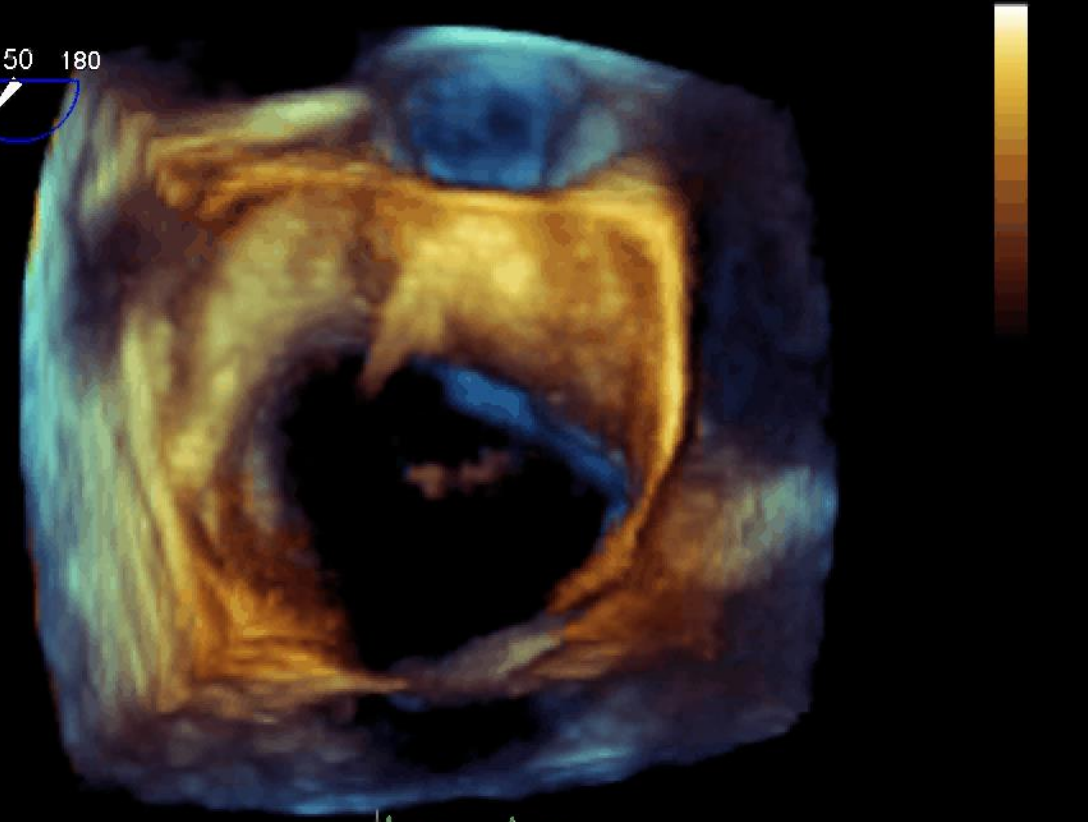
Annulus	
DAIPm	= 45.7 mm
DAP	= 45.7 mm
H	= 6.2 mm
C3D	= 147.2 mm
A2D	= 1825.8 mm ²
Leaflet Area	
A3DE Ant	= 1161.4 mm ²
A3DE Post	= 743.9 mm ²
Leaflet Volume	
V Tent	= 0.4 ml
V Prol	= 3.3 ml
Leaflet Len / Ang	
L3DE A2	= 32.8 mm
L3DE P2	= 16.6 mm
β Ant	= 4.9 °
β Post	= 11.3 °
β NPA	= 163.8 °
HTent	= 1.9 mm
HProl	= 6.8 mm
Coaptation	
L2DAIPm	= 33.6 mm
Aortic-Mitral	
β	= ***** °
Papillary	
LChordAI	= 33.3 mm
LChordPm	= 25.7 mm

Speaker



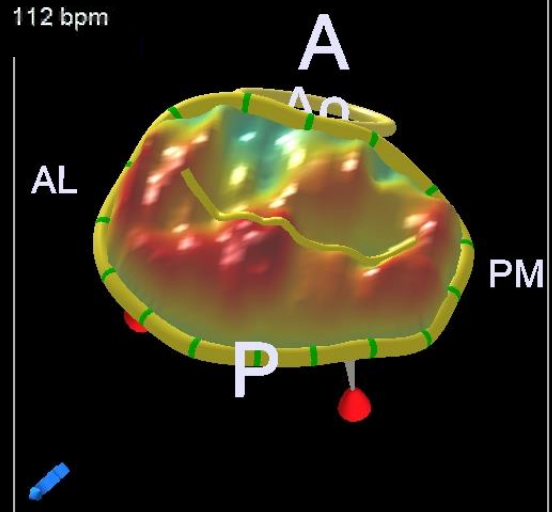
EUROPEAN
TERBALKAN
MEDICAL CENTER
GREECE • THESSALONIKI

VR 10Hz
5cm
Live 3D
3D 35%
3D 40dB



EUROPEAN
INTERBALKAN
MEDICAL CENTER
GREECE • THESSALONIKI

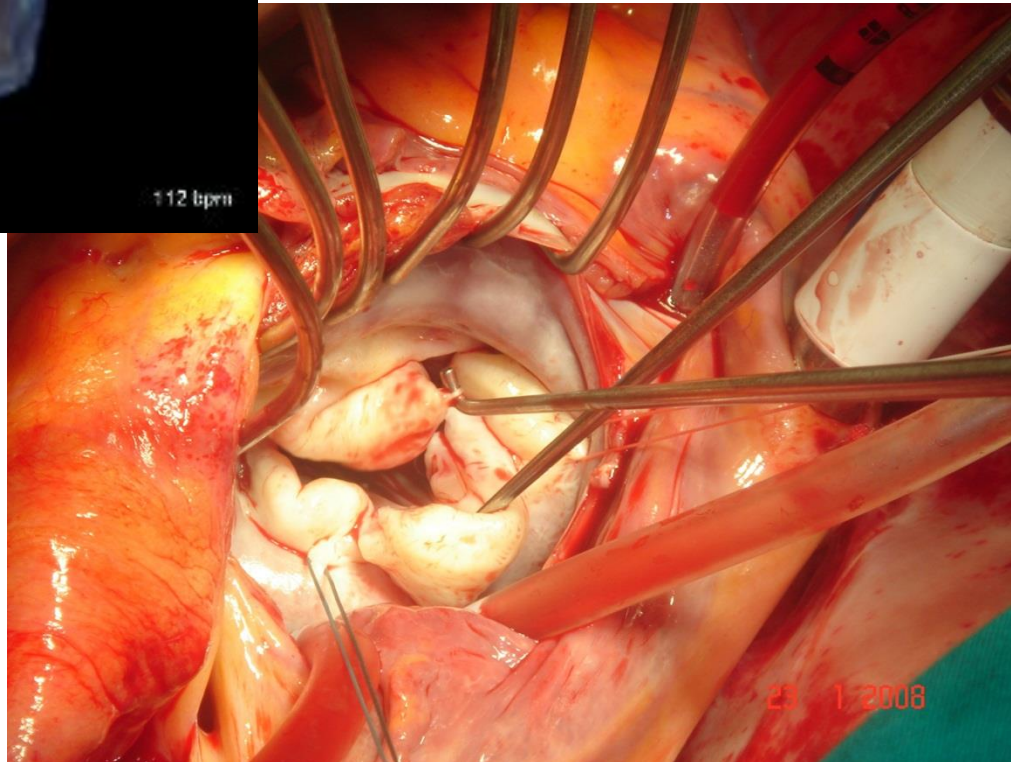
112 bpm



Annulus	
DAI _{Pm}	= 52.3 mm
DAP	= 43.2 mm
H	= 8.2 mm
C3D	= 164.4 mm
A2D	= 1951.7 mm ²
Leaflet	
L3D Ant	= 26.1 mm
L3D Post	= 22.2 mm
θ Ant	= 15.6°
θ Post	= 17.0°
θ NPA	= 147.4°
HTent	= 1.6 mm
HProI	= 10.7 mm
A3D Ant	= 1305.0 mm ²
A3D Post	= 1395.1 mm ²
V _{Tent}	= 0.1 ml
V _{ProI}	= 9.3 ml
Aortic-Mitral	
θ	= 131.9°
Cuspitation	

Speaker





Speaker



EUROPEAN
INTERBALKAN
MEDICAL CENTER
GREECE • THESSALONIKI